

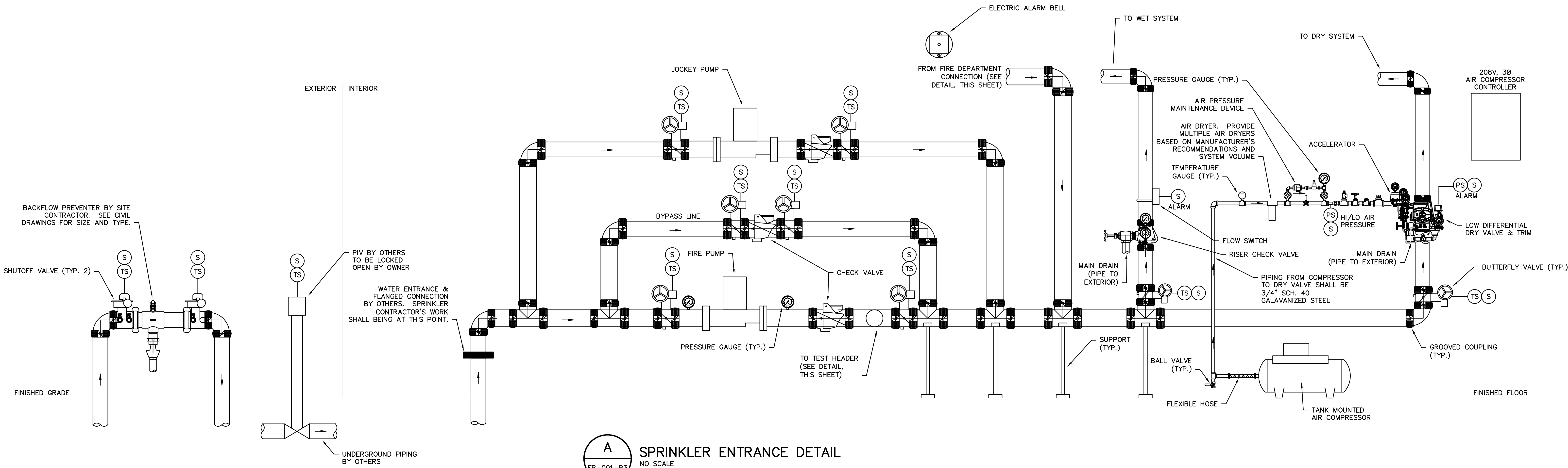
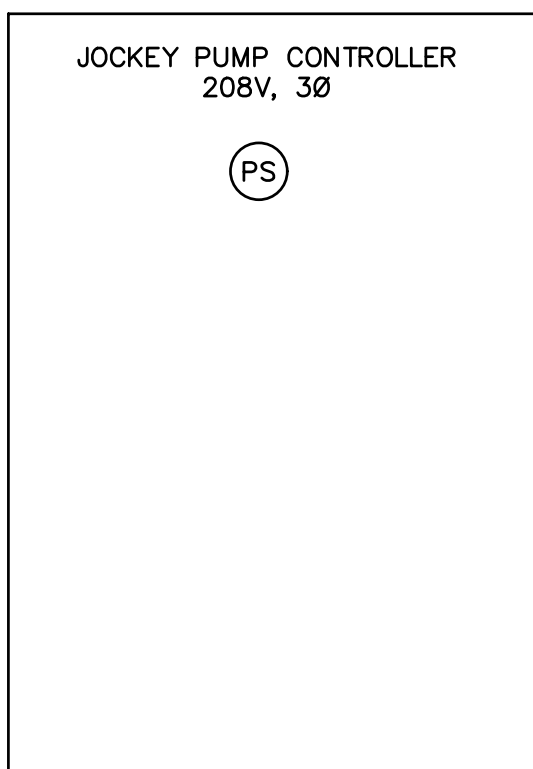
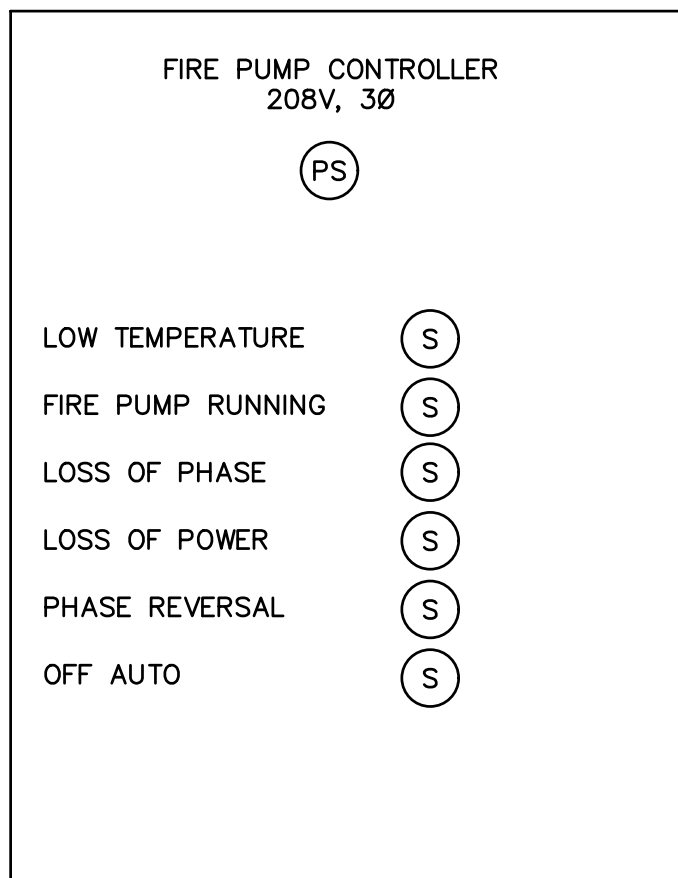
N  
M  
L  
K  
J  
I  
H  
G  
F  
E  
D  
C  
B  
A

GENERAL NOTES: (APPLIES TO ALL FIRE PROTECTION DRAWINGS)

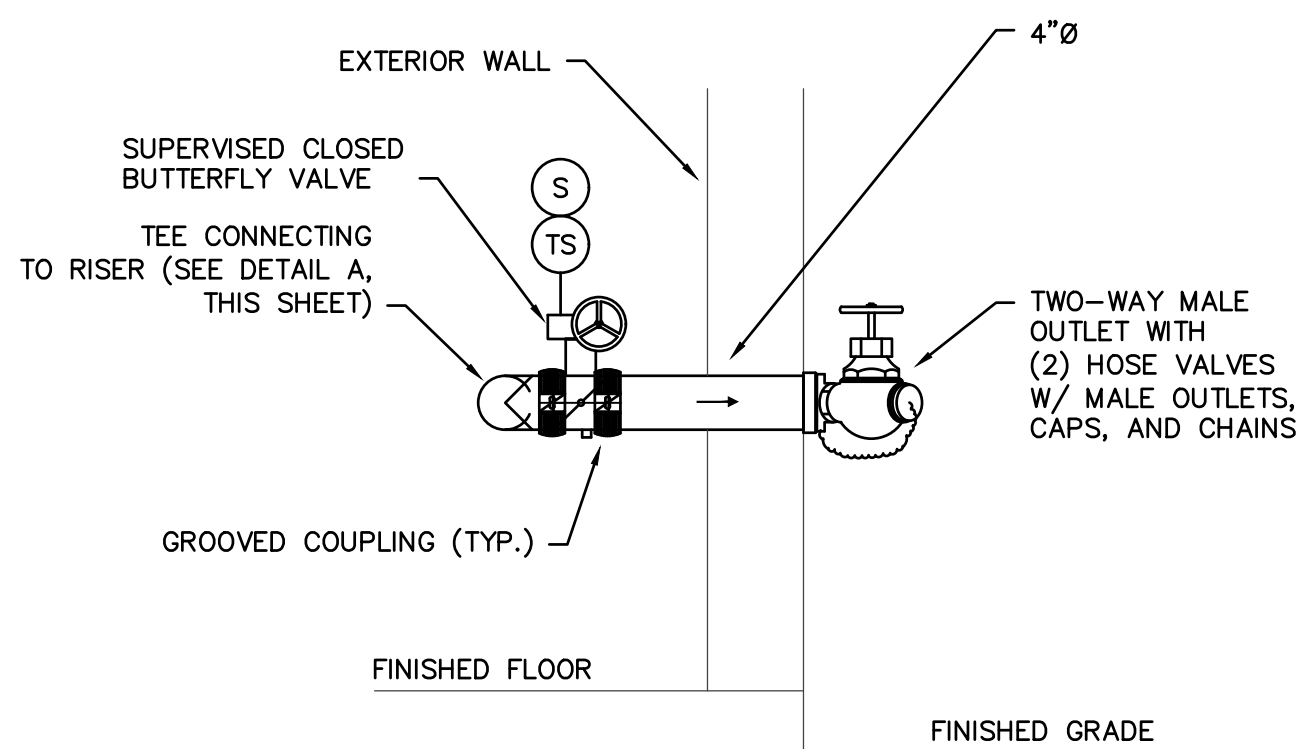
- SPRINKLER CONTRACTOR SHALL BE RESPONSIBLE FOR COORDINATION WITH BUILDING STRUCTURE AND SYSTEMS, AS WELL AS THE WORK OF OTHER TRADES IN ORDER TO ELIMINATE CONFLICTS.
- SPRINKLER CONTRACTOR'S DESIGN SHALL BE PER NFPA 13 AND THE NC STATE FIRE CODE (LATEST EDITION APPROVED BY THE NC BUILDING CODE COUNCIL WITH NC AMENDMENTS).
- PROVIDE AUXILIARY DRAINS WHEREVER WET SYSTEM PIPING IS ROUTED SUCH THAT WATER IS TRAPPED IN EXCESS OF 5 GALLONS, OR WHEREVER DRY SYSTEM PIPING IS ROUTED SUCH THAT ANY AMOUNT OF WATER IS TRAPPED.
- SLOPE DRY SYSTEM BACK TO RISER OR AUXILIARY DRAINS. MAINS SHALL BE SLOPED AT 1/4" PER 10 FT. PER NFPA 13.
- LIGHT HAZARD OCCUPANCIES: PER NFPA 13, DESIGN DENSITY SHALL BE 0.1 GPM PER SQUARE FOOT OVER THE MOST REMOTE 1,500 SQUARE FEET. REMOTE AREA SHALL BE INCREASED BY 30% WHERE SPRINKLER ARE LOCATED BELOW SLOPED CEILINGS OR ROOFS WITH SLOPE GREATER THAN 2:12 PER NFPA 13. REMOTE AREA SHALL BE DECREASED PER NFPA 13 WHERE POSSIBLE DUE TO THE USE OF QUICK RESPONSE HEADS. HOSE ALLOWANCE FOR LIGHT HAZARD SHALL BE 100 GPM PER NFPA 13.
- ORDINARY HAZARD I OCCUPANCIES: PER NFPA 13, DESIGN DENSITY SHALL BE 0.15 GPM PER SQUARE FOOT OVER THE MOST REMOTE 1,500 SQUARE FEET. REMOTE AREA SHALL BE INCREASED BY 30% WHERE SPRINKLER ARE LOCATED BELOW SLOPED CEILINGS OR ROOFS WITH SLOPE GREATER THAN 2:12 PER NFPA 13. REMOTE AREA SHALL BE DECREASED PER NFPA 13 WHERE POSSIBLE DUE TO THE USE OF QUICK RESPONSE HEADS. HOSE ALLOWANCE FOR ORDINARY HAZARD I SHALL BE 250 GPM PER NFPA 13.
- LOCATE SPRINKLER HEADS IN THE CENTER OF CEILING TILES AND IN-LINE WITH LIGHTS AND OTHER CEILING MOUNTED ITEMS.

LEGEND

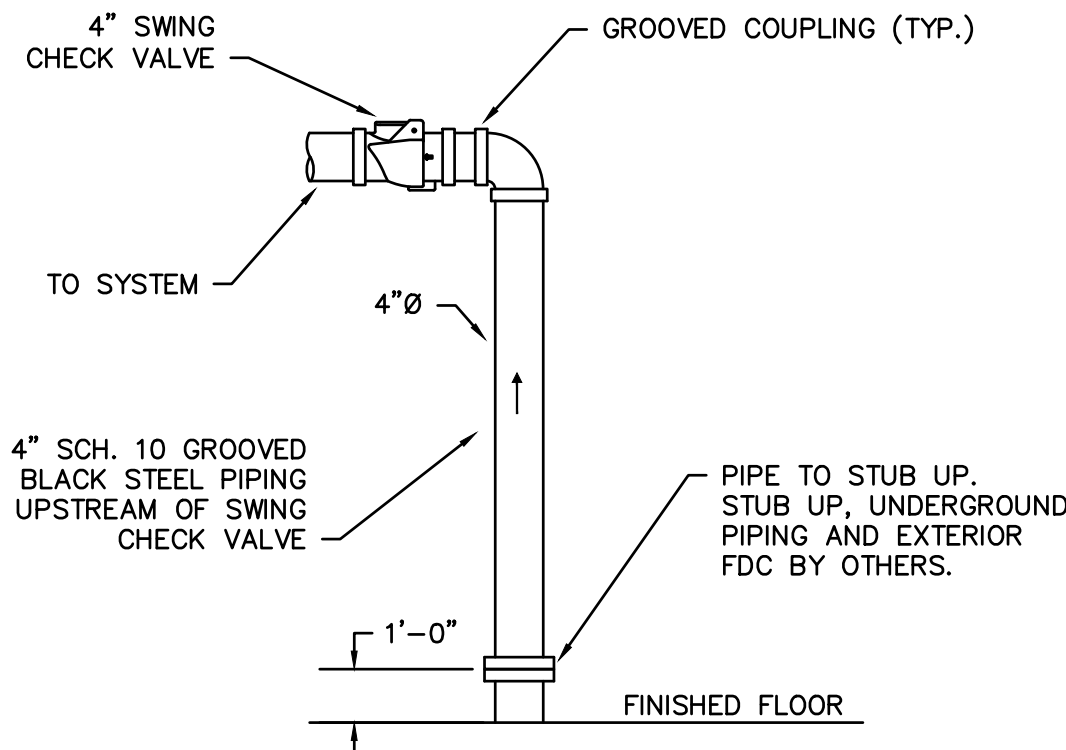
SYMBOL	DESCRIPTION
(PS)	PRESSURE SWITCH
(TS)	TAMPER SWITCH
(S)	SIGNALING SYSTEM INTERFACE



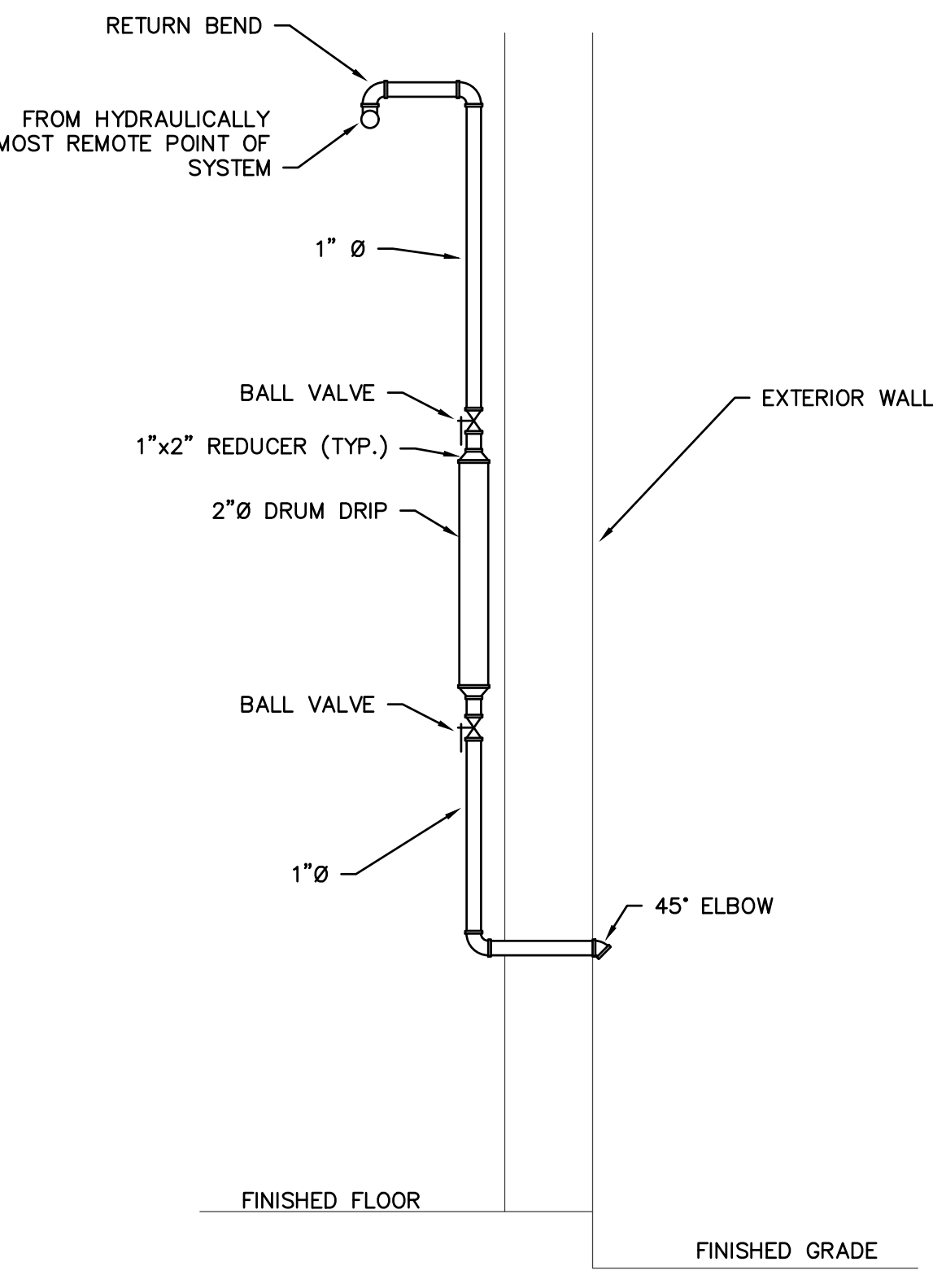
**A**  
FP-001-P3  
NO SCALE  
SPRINKLER ENTRANCE DETAIL



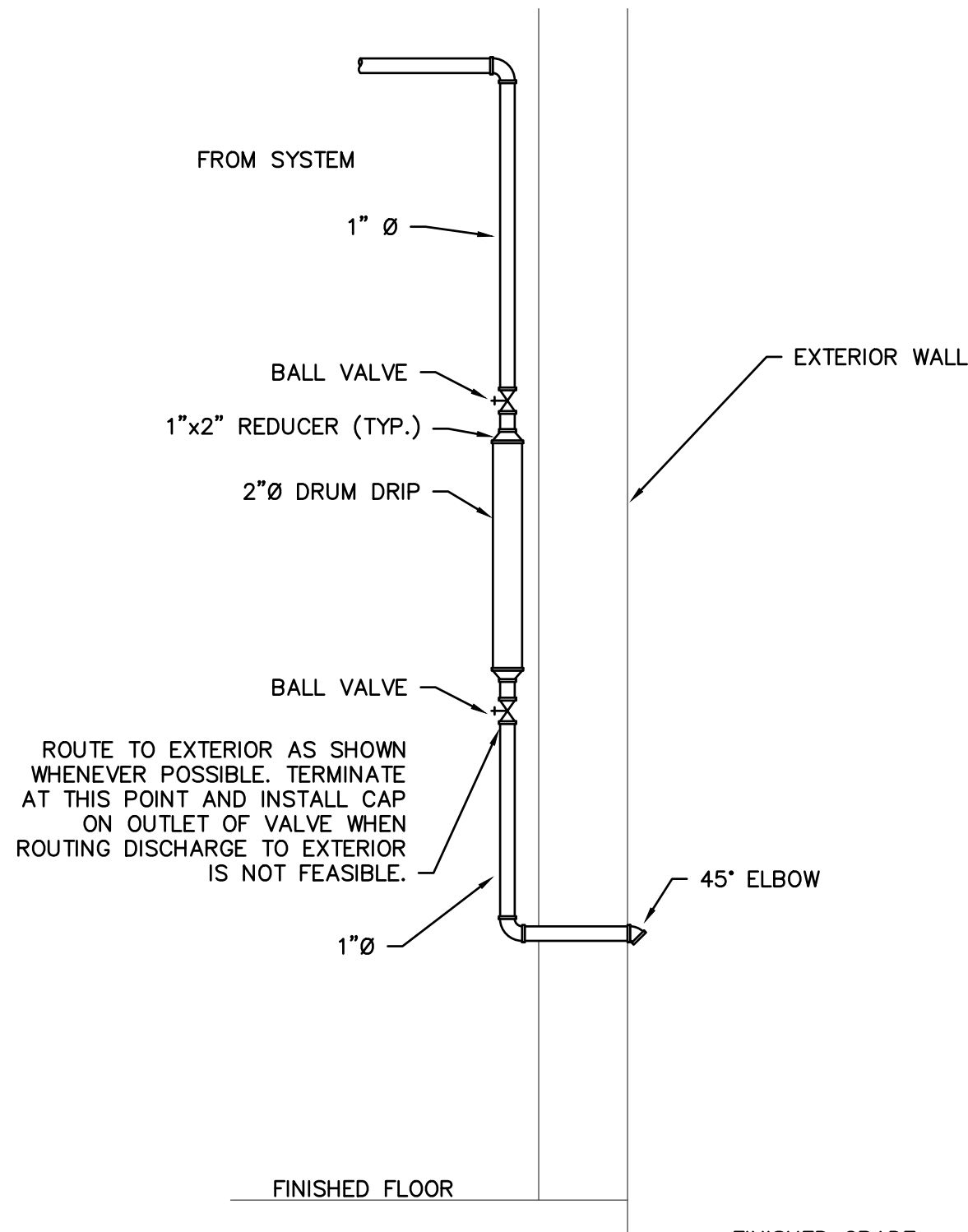
**B**  
FP-001-P3  
NO SCALE  
BACKFLOW PREVENTER TEST HEADER DETAIL



**C**  
FP-001-P3  
NO SCALE  
FIRE DEPT. CONNECTION



**D**  
FP-001-P3  
NO SCALE  
INSPECTOR'S TEST CONNECTION (DRY)



**E**  
FP-001-P3  
NO SCALE  
AUXILIARY DRAIN DETAIL (DRY)

PROJECT INFORMATION

**NORTH WATERFRONT PARK**

10 COWAN STREET  
WILMINGTON, NORTH CAROLINA

CITY OF WILMINGTON  
Community Services Department  
PO Box 1810, Wilmington, North Carolina 28402  
City of Wilmington Project Code 3CPRK1860

Landscape Architecture = L  
HARGREAVES JONES  
180 Varick Street, Suite 204, New York, NY 10014  
www.hargreavesjonesla.com  
NC License #C-513

Architecture =  
SAGE & COOMBE ARCHITECTS  
12-16 Vestry Street, 5th Floor, New York, NY 10013  
www.sageandcoombe.com

Acoustic/Theater/AV = AT  
OAP.P.C.  
77 Water Street, New York NY 10015  
www.arup.com

Civil Engineering = C  
Structural Engineering = S  
Geotechnical Engineering = G  
STEWART  
223 S. West Street, Suite 1100, Raleigh, NC 27603  
www.stewartinc.com  
NC License #C-1051

Environmental Engineering = EE  
SOIL & ENVIRONMENTAL CONSULTANTS, PA  
8412 Falls of Neuse Road, Suite 104, Raleigh, NC 27615  
www.sandec.com  
EAGLE RESOURCES  
215 West Moore Street, Southport, NC 28461  
www.eaglesources.com

Irrigation = I  
CLARK IRRIGATION DESIGN & CONSULTING, INC  
P.O. Box 605, Lenoir, GA 30553  
www.clarkirrigationdesign.com

Landscape Soil = LS  
LANDIS, PLLC  
3908 Bentley Brook Dr. Raleigh, NC 27612  
www.landispllc.com

Mechanical Engineering = M  
Electrical Engineering = E  
Plumbing Engineering = P  
Fire Protection = FP  
CHEATHAM & ASSOCIATES, PA  
3412 Enterprise Drive, Wilmington NC 28405  
www.cheathampa.com  
NC License #C-1073

Marine Structural Engineering = SM  
ANDREW CONSULTING ENGINEERS  
3811 Piedmont Avenue, Suite 300, Wilmington, NC 28403  
www.andrewengineers.com

Water Fountain Design = WF  
DELTA FOUNTAINS  
11484 Columbia Park Dr. W., Suite 4, Jacksonville, FL 32258  
www.deltafountains.com

Lighting Design = EL  
TILLOTSON DESIGN ASSOCIATES  
40 North Street, Room 703, New York NY 10013  
www.tillotsondesign.com

SEAL/SIGNATURE

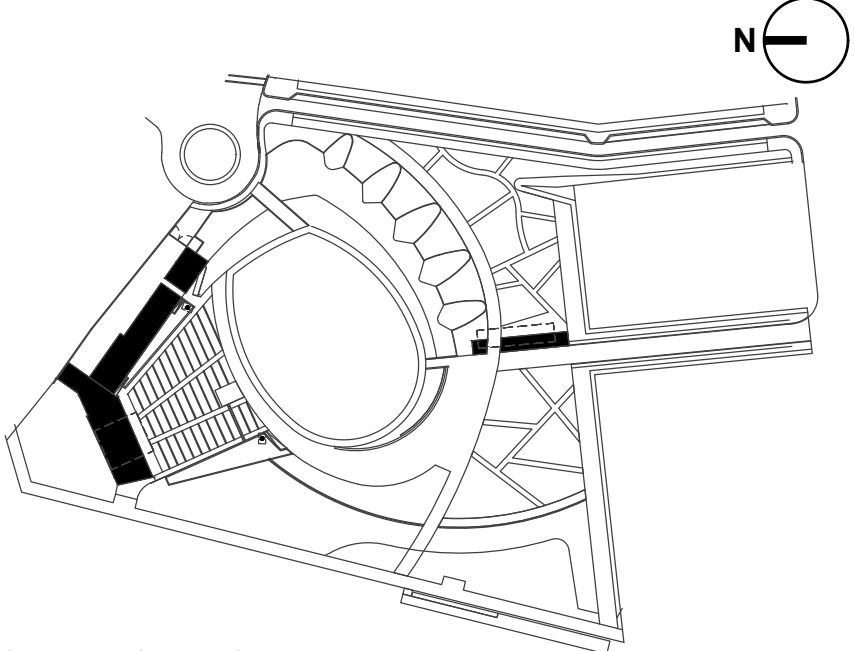
CAPA 17109

**PROGRESS DRAWINGS**  
DO NOT USE FOR CONSTRUCTION

ISSUE/REVISIONS

NO.	DESCRIPTION	DATE
1	30% CONSTRUCTION DOCUMENTS P3 & P4	06/07/2019
2	60% CONSTRUCTION DOCUMENTS P3	07/26/2019
3	95% CONSTRUCTION DOCUMENTS P3 & P4	12/04/2019

KEY MAP



SHEET INFORMATION

Project No.: NWP 1701  
Drawn By: CG, SL  
Checked By: CG  
Date: 12/04/2019  
Scale: As indicated

SHEET TITLE

**FIRE PROTECTION  
GENERAL NOTES AND  
DETAILS**

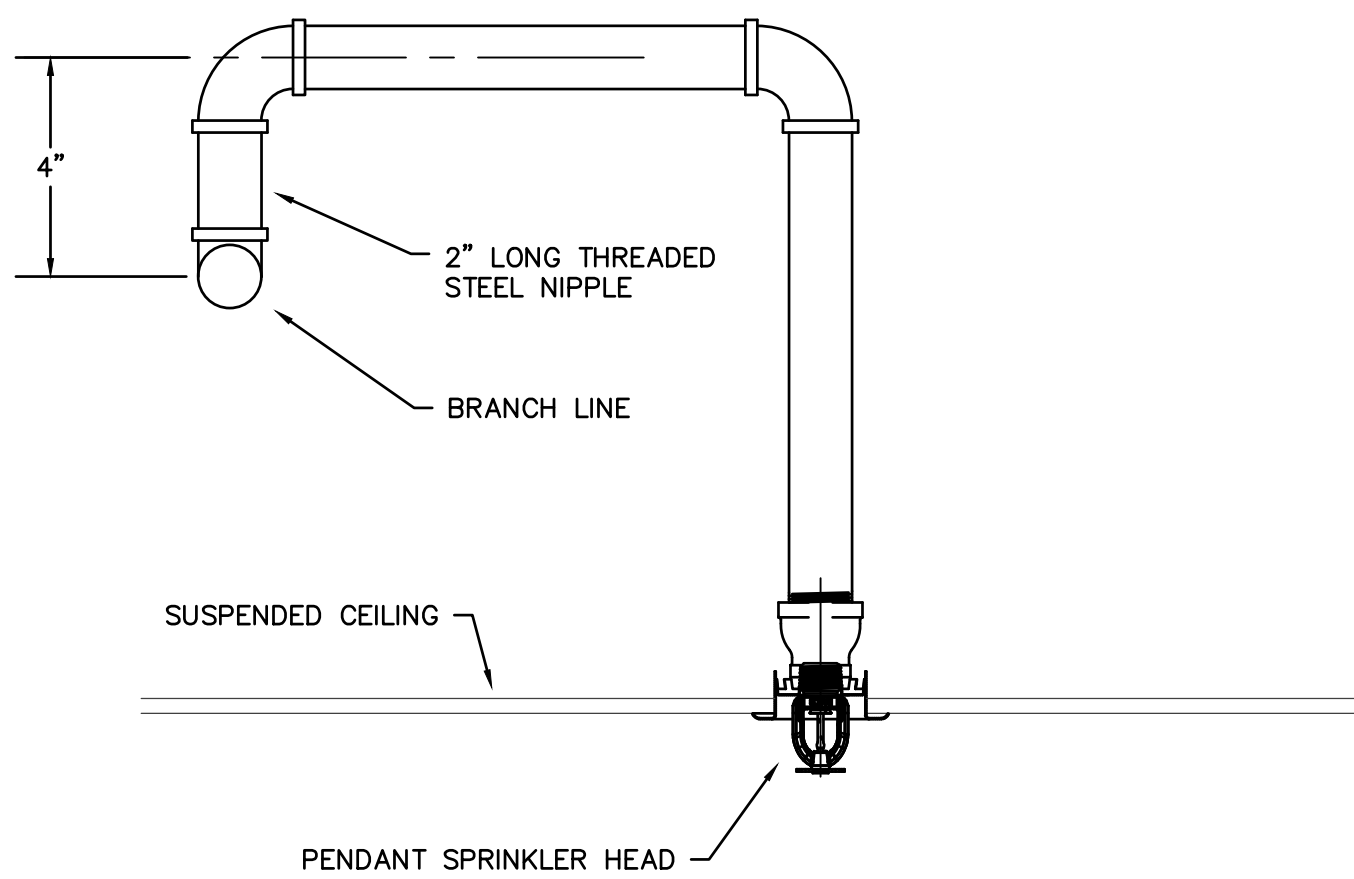
SHEET NO.

**FP-001-P3**

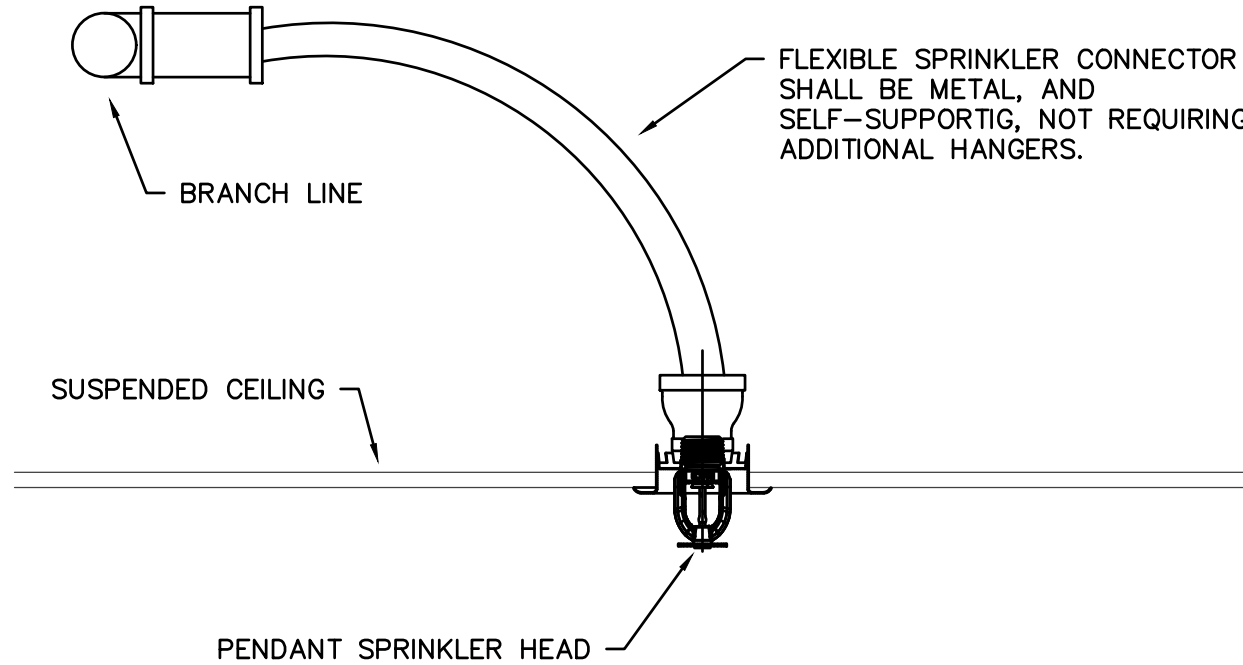
1 2 3 4 5 6 7 8 9 10 11 12 13 14 15 16 17

N  
M  
L  
K  
J  
I  
H  
G  
F  
E  
D  
C  
B  
A

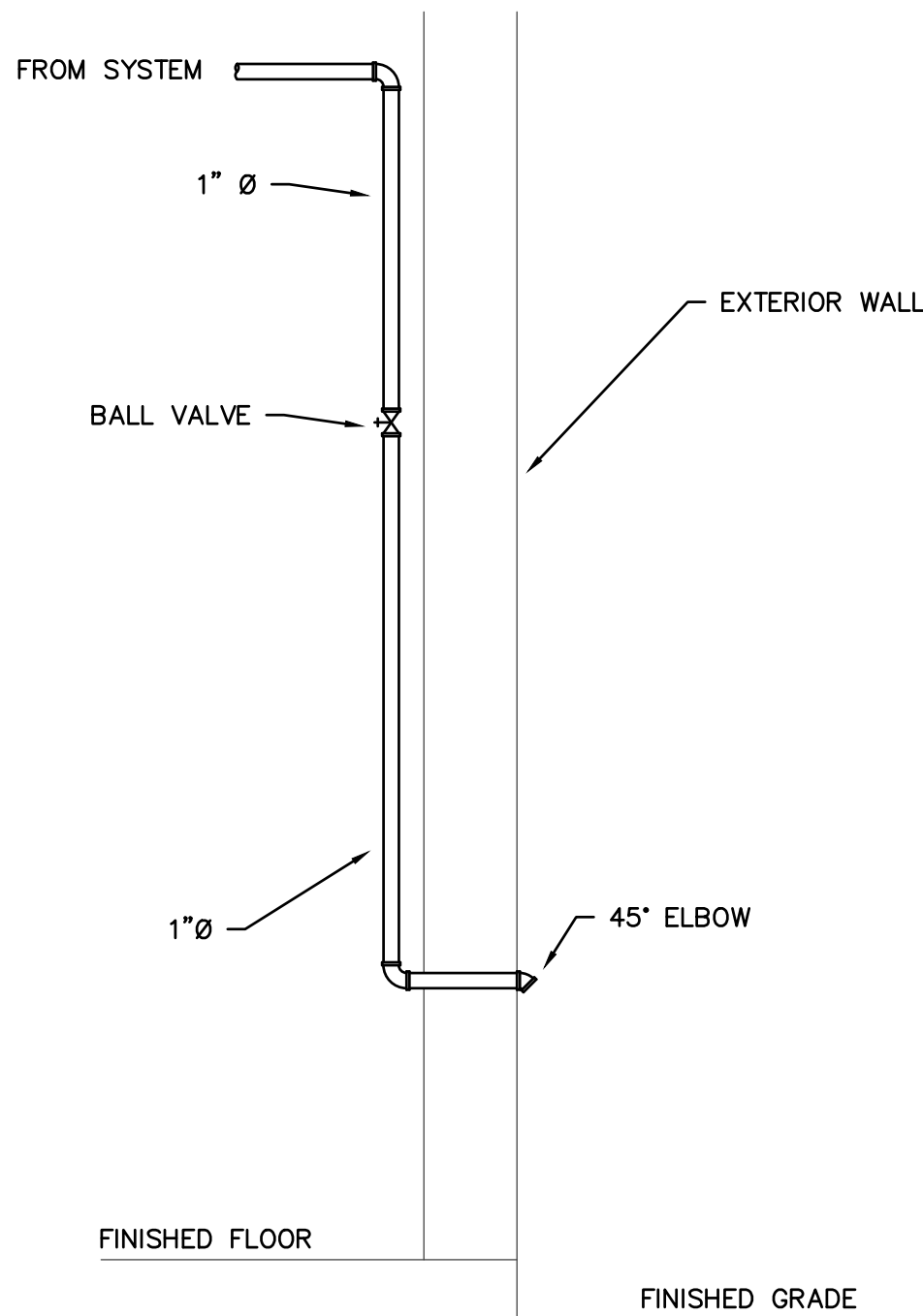
1 2 3 4 5 6 7 8 9 10 11 12 13 14 15 16 17



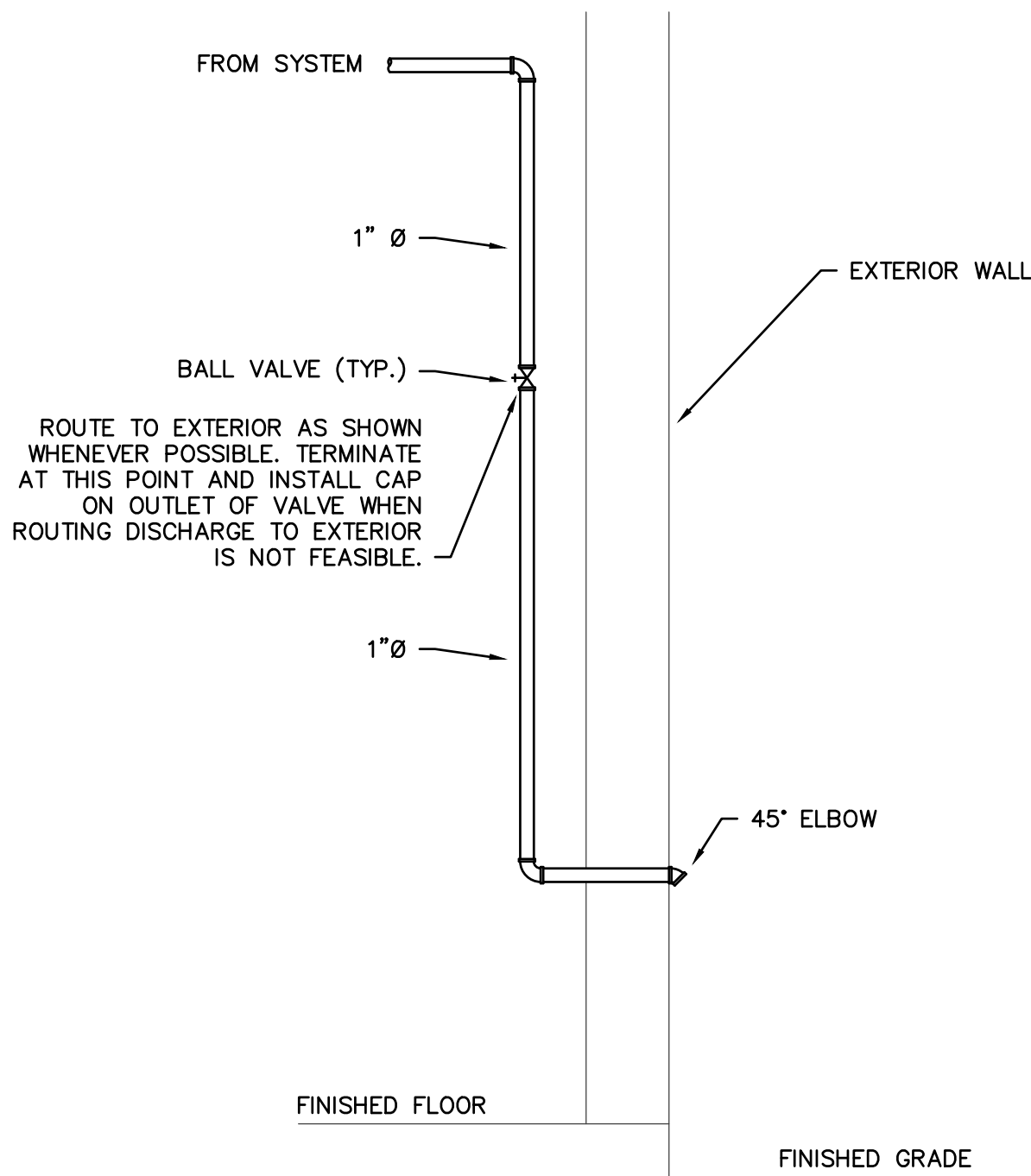
**A**  
FP-002-P3  
ARMOVER DETAIL  
NO SCALE



**B**  
FP-002-P3  
FLEXIBLE SPRINKLER HEAD DETAIL  
NO SCALE



**C**  
FP-002-P3  
INSPECTOR'S TEST CONNECTION (WET)  
NO SCALE



**D**  
FP-002-P3  
AUXILIARY DRAIN DETAIL (WET)  
NO SCALE

PROJECT INFORMATION

# NORTH WATERFRONT PARK

10 COWAN STREET  
WILMINGTON, NORTH CAROLINA

CITY OF WILMINGTON  
Community Services Department  
PO Box 1810, Wilmington, North Carolina 28402  
City of Wilmington Project Code 3CPRK1860

Landscape Architecture = L  
**HARGREAVES JONES**  
180 Varick Street, Suite 204, New York, NY 10014  
www.hargreavesjonesla.com  
NC License #C-513

Architecture = A  
**SAGE & COOMBE ARCHITECTS**  
12-16 Vestry Street, 5th Floor, New York, NY 10013  
www.sageandcoombe.com

Acoustic/Theater/AV = AT  
**ARP.P.C.**  
77 Water Street, New York NY 10015  
www.arup.com

Civil Engineering = C  
Structural Engineering = S  
Geotechnical Engineering = G  
**STEWART**  
223 S. West Street, Suite 1100, Raleigh, NC 27603  
www.stewartinc.com  
NC License #C-1051

Environmental Engineering = EE  
**SOIL & ENVIRONMENTAL CONSULTANTS, PA**  
8412 Falls of Neuse Road, Suite 104, Raleigh, NC 27615  
www.sandec.com  
**EAGLE RESOURCES**  
215 West Moore Street, Southport, NC 28461  
www.eagleresources.com

Irrigation = I  
**CLARK IRRIGATION DESIGN & CONSULTING, INC**  
P.O. Box 695, Levonia, GA 30555  
www.clarkirrigationdesign.com

Landscape Soil = LS  
**LANDIS, PLLC**  
5906 Bentley Brook Dr. Raleigh, NC 27612  
www.landispllc.com

Mechanical Engineering = M  
Electrical Engineering = E  
Plumbing Engineering = P  
Fire Protection = FP  
**CHEATHAM & ASSOCIATES, PA**  
3412 Enterprise Drive, Wilmington NC 28405  
www.cheathamco.com  
NC License #C-1073

Marine Structural Engineering = SM  
**ANDREW CONSULTING ENGINEERS**  
3811 Peachtree Avenue, Suite 300, Wilmington, NC 28403  
www.andrewengineers.com

Water Fountain Design = WF  
**DELTA FOUNTAINS**  
11494 Columbia Park Dr. W., Suite 4, Jacksonville, FL 32258  
www.deltafountains.com

Lighting Design = EL  
**TILLOTSON DESIGN ASSOCIATES**  
40 North Street, Room 703, New York NY 10013  
www.tillotsondesign.com

SEAL/SIGNATURE

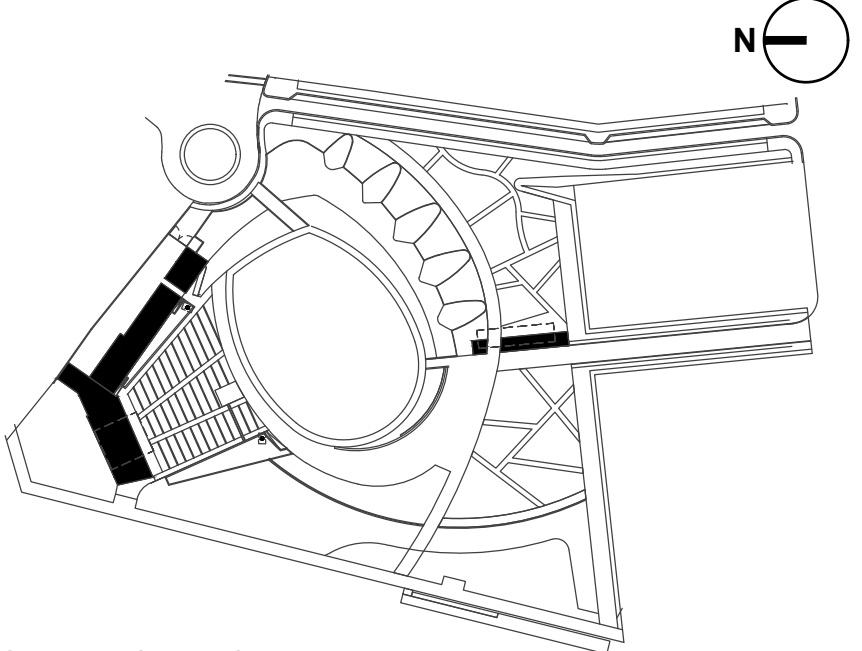
CAPA 17109

**PROGRESS DRAWINGS**  
DO NOT USE FOR CONSTRUCTION

ISSUE/REVISIONS

NO.	DESCRIPTION	DATE
1	30% CONSTRUCTION DOCUMENTS P3 & P4	06/07/2019
2	60% CONSTRUCTION DOCUMENTS P3	07/26/2019
3	95% CONSTRUCTION DOCUMENTS P3 & P4	12/04/2019

KEY MAP



SHEET INFORMATION

Project No.: NWP 1701  
Drawn By: CG, SL  
Checked By: CG  
Date: 12/04/2019  
Scale: As indicated

SHEET TITLE

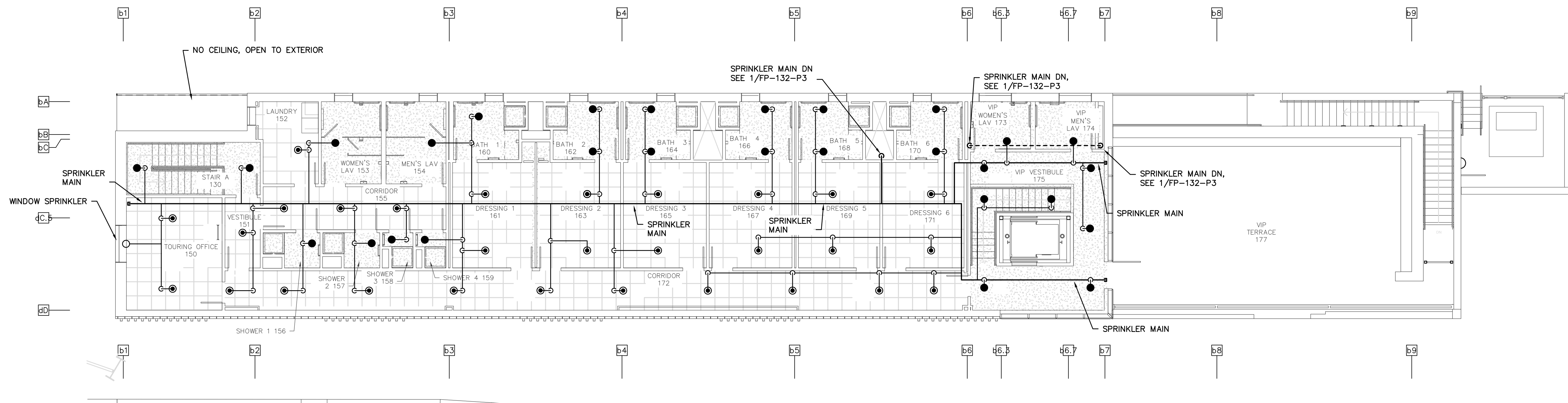
**FIRE PROTECTION  
DETAILS**

SHEET NO.

**FP-002-P3**

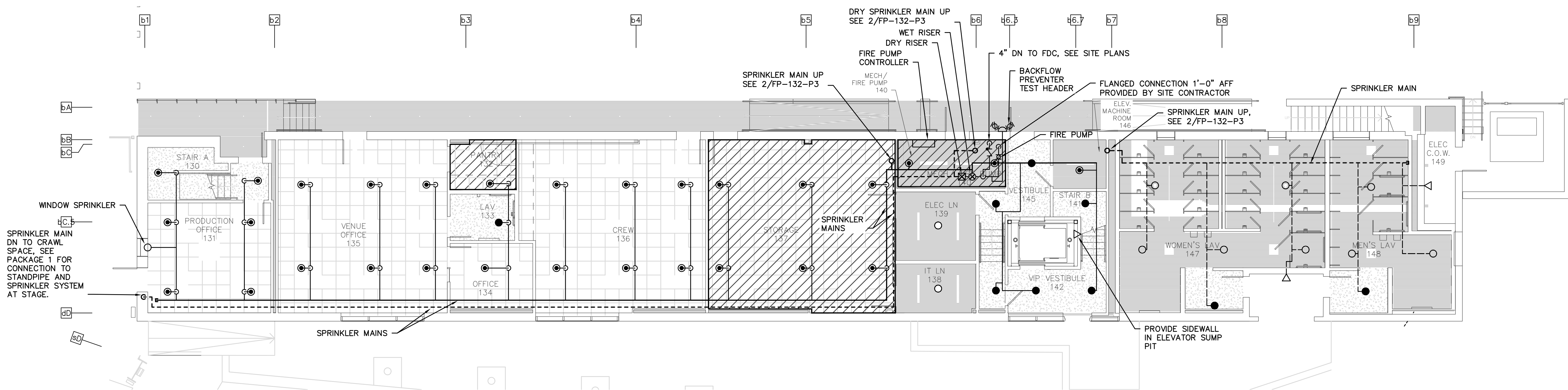
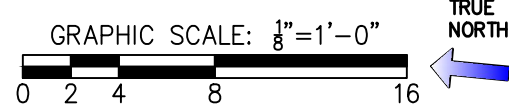


N  
M  
L  
K  
J  
I  
H  
G  
F  
E  
D  
C  
B  
A



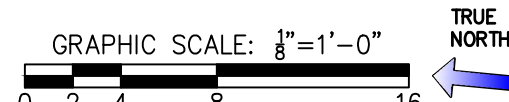
2  
FP-132-P3

FIRE PROTECTION STAGE BUILDING SECOND FLOOR PLAN  
SCALE: 1/8" = 1'-0"



1  
FP-132-P3

FIRE PROTECTION STAGE BUILDING FIRST FLOOR PLAN  
SCALE: 1/8" = 1'-0"



PIPING LEGEND

- SPRINKLER MAIN (WET)
- SPRINKLER BRANCH (WET)
- SPRINKLER MAIN (DRY)
- SPRINKLER BRANCH (DRY)
- CAP
- PIPE RISER DOWN
- PIPE RISER UP
- WET SPRINKLER RISER
- DRY SPRINKLER RISER

SPRINKLER LEGEND

- RECESSED PENDANT SPRINKLER HEAD
- CONCEALED PENDANT SPRINKLER HEAD
- DRY RECESSED PENDANT SPRINKLER HEAD
- DRY CONCEALED PENDANT SPRINKLER HEAD
- UPRIGHT SPRINKLER HEAD
- SIDEWALL SPRINKLER HEAD
- DRY SIDEWALL SPRINKLER HEAD

HAZARD LEGEND

- LIGHT HAZARD
- ORDINARY HAZARD I

PROJECT INFORMATION

# NORTH WATERFRONT PARK

10 COWAN STREET  
WILMINGTON, NORTH CAROLINA

CITY OF WILMINGTON  
Community Services Department  
PO Box 1810, Wilmington, North Carolina 28402  
City of Wilmington Project Code 3CPRK1860

Landscape Architecture = L  
HARGREAVES JONES  
180 Varick Street, Suite 204, New York, NY 10014  
www.hargreavesjonesla.com  
NC License #C-513

Architecture = A  
SAGE & COOMBE ARCHITECTS  
12-16 Vestry Street, 5th Floor, New York, NY 10013  
www.sageandcoombe.com

Acoustic/Theater/AV = AT  
CAP.P.C.  
77 Water Street, New York NY 10015  
www.arup.com

Civil Engineering = C  
Structural Engineering = S  
Geotechnical Engineering = G  
STEWART  
223 S. West Street, Suite 1100, Raleigh, NC 27603  
www.stewartinc.com  
NC License #C-1051

Environmental Engineering = EE  
SOIL & ENVIRONMENTAL CONSULTANTS, PA  
3412 Falls of Neuse Road, Suite 104, Raleigh, NC 27615  
www.sandec.com  
EAGLE RESOURCES  
215 West Moore Street, Southport, NC 28461  
www.eaglesources.com

Irrigation = I  
CLARK IRRIGATION DESIGN & CONSULTING, INC  
P.O. Box 695, Levonia, GA 30553  
www.clarkirrigationdesign.com

Landscape Soil = LS  
LANDIS, PLLC  
5906 Bentley Brook Dr. Raleigh, NC 27612  
www.landispllc.com

Mechanical Engineering = M  
Electrical Engineering = E  
Plumbing Engineering = P  
Fire Protection = FP  
CHEATHAM & ASSOCIATES, PA  
3412 Enterprise Drive, Wilmington, NC 28405  
www.cheatham.com  
NC License #C-1073

Marine Structural Engineering = SM  
ANDREW CONSULTING ENGINEERS  
3811 Peachtree Avenue, Suite 300, Wilmington, NC 28403  
www.andrewengineers.com

Water Fountain Design = WF  
DELTA FOUNTAINS  
11494 Columbia Park Dr. W., Suite 4, Jacksonville, FL 32258  
www.deltafountains.com

Lighting Design = EL  
TILLOTSON DESIGN ASSOCIATES  
40 North Street, Room 703, New York NY 10013  
www.tillotsondesign.com

SEAL/SIGNATURE

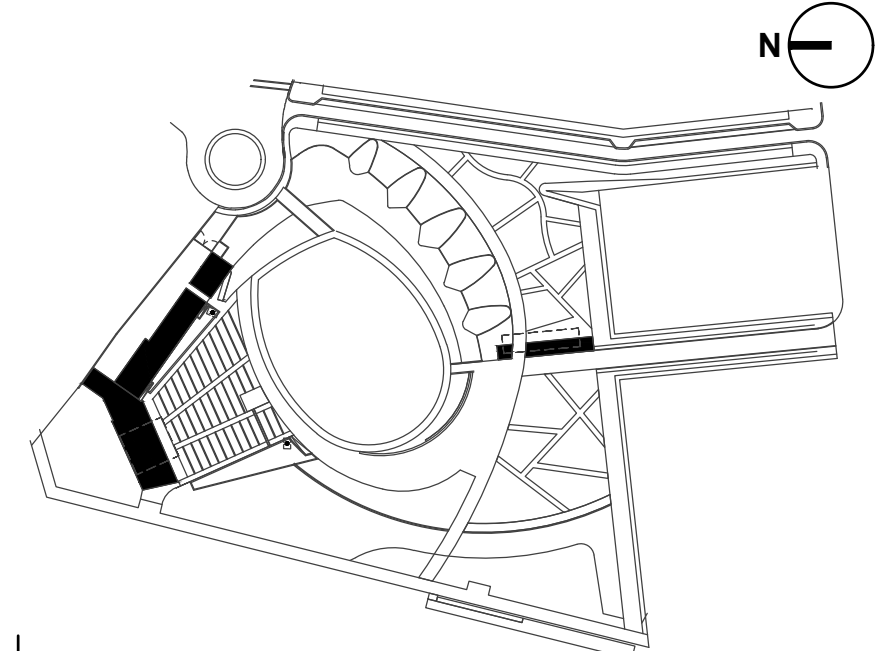
CAPA 17109

PROGRESS DRAWINGS  
DO NOT USE FOR CONSTRUCTION

ISSUE/REVISIONS

NO.	DESCRIPTION	DATE
1	30% CONSTRUCTION DOCUMENTS P3 & P4	06/07/2019
2	60% CONSTRUCTION DOCUMENTS P3	07/26/2019
3	95% CONSTRUCTION DOCUMENTS P3 & P4	12/04/2019

KEY MAP



SHEET INFORMATION

Project No.: NWP 1701  
Drawn By: CG, SL  
Checked By: CG  
Date: 12/04/2019  
Scale: As indicated

SHEET TITLE

FIRE PROTECTION FLOOR  
PLANS STAGE BUILDING

SHEET NO.

FP-132-P3